



# The Thimbleful

Capital Quilters Guild

Raleigh, North Carolina

November 2021

## Next Meeting

Thursday, November 17th

6:30 Social

7:00 Meeting Begins

**Location:** Temple Beth Or

5315 Creedmoor Road

Raleigh, NC 27612

## Remember to Bring:

**Name tag**

**Membership pin**

**Comfort Quilts**

**New Membership Forms and Dues**

**Holiday Bazaar Items w/Bid Sheets**

**Winter/Spring Workshops**

**Registration Form**

**And of course....**

**A Quilting Friend!**

## In This Edition...

- 2022 CQG Quilt Show Rules
- Winter and Spring Workshops
- Another Comfort Quilt Workshop on Zoom

## Table of Contents

Page 2	President's Message
Page 5	Winter/Spring Classes
Page 8	Committee Reports
Page 9	2022 Quilt Show Rules
Page 12	One Quilter's Experience
Page 15	Our Common Threads
Page 16	Comfort Quilt Workshop
Page 18	Our Advertisers
Page 22	Guild Leadership
Page 23	Upcoming Events
Page 24	Guild Forms—including Bazaar Bid sheet



## President's Message

Hi Everyone!

November is always a time to reflect on those things we are grateful for and in regard to the guild, I am very grateful for all of you who make this organization such a wonderful community. I am grateful for all the beautiful quilts made and donated by our members. I am thankful to all the volunteers who hold board, committee and volunteer positions that allow us to have the diverse activities that we are able to offer. Most of all, I am grateful for all those who came before us and created an organization that continues to thrive today. Thank you.

This month, we have several guild activities that I wanted to remind you of. First, a Comfort Quilt Workshop will be held on Saturday, November 13<sup>th</sup> via Zoom. Roberta has created another fun and easy pattern for anyone who is interested in trying it out. It uses 10" squares that are then cut apart and reshuffled when sewn back together. For more information about the pattern, please be sure to look on the guild's website. If you would like to register for this FREE event, please email me at [information@capitalquilters.org](mailto:information@capitalquilters.org). We also hope to be providing more information about the requests for stockings.

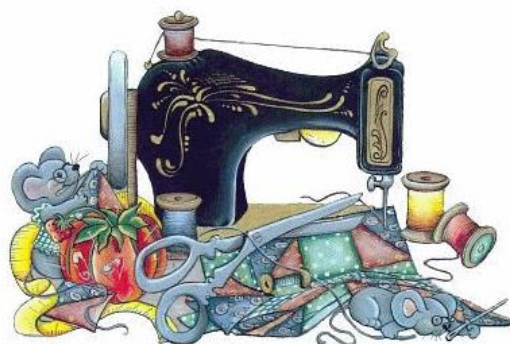
On Thursday, November 17<sup>th</sup>, the guild meeting will include our annual Holiday Bazaar. Please be sure to arrive at 6:30 pm to turn in items that will be sold. If you are looking for ideas, popular items from the past have included table toppers, pillows, placemat sets, purses or bags, college related quilts and items, necklaces, and microwave bowl holders. Please print out and bring the Bid Sheet. The silent auction will not begin until after the meeting has begun and there will be an option for "Buy Now". If you have any questions regarding the Bazaar, please contact Irene Thomas, our Fundraising Chair, at [information@capitalquilters.org](mailto:information@capitalquilters.org).

We will also conclude the sale of the Holiday Blocks at the November Meeting. The remaining kits will go on sale as early as 6:30 pm for \$2 each (cash only please). There will be no limit on the number of blocks that can be purchased. Please remember that all blocks are due at the December Meeting.

December is always a very busy month, but we do hope that you will attend our December meeting as we will have a speaker. Please be on the lookout for more details in the next few weeks.

Happy Quilting!

Anna



# The President's Challenge

## A Ribbon Runs Through It

The Rules....

1. The finished quilt must measure 18" wide by 36" long.
2. Each member will be provided a piece of fabric which must enter on the left side of the quilt at 3" wide and exit on the right side of the quilt at 3" wide. This piece can be pieced, appliquéd or be attached by any method and can change width as long as it is 3" on the edges. It must run to the edge so you may want to consider finishing your edges by adding facing or using a pillowcase instead of binding. More tips and tricks to come.
3. Quilts will be due by the 2022 Quilt Show since we will want to display them there. Exact due dates will be published once the quilt show committee publishes them. Please know that having your project judged is OPTIONAL so please participate.



Country Quilters of McHenry [A Ribbon Runs Through It \(mchenryquilters.org\)](http://mchenryquilters.org)



## From The Board

### 2022 Raffle Quilt

Hello Members,

Let's keep the raffle ticket sales going! They make great stocking stuffer! Thanks go out to Sue Ann and Jim for selling tickets at the Hearts and Hands quilt show via a picture while the quilt itself was being shown at the state fair. Please get a hold of me if you need tickets.

[Buckeyegirlict@gmail.com](mailto:Buckeyegirlict@gmail.com) or 315-414-6922

Also, don't forget that at our next Guild meeting we'll be having our Holiday Bazaar. Please bring your items with a completed bid sheet. But if you forget your bid sheet, you know I'll have you covered. And remember to bring some extra cash for those one-of-a-kind Christmas gifts.

Thanks for your support. Irene Thomas



a

### Spotlight on Comfort Quilt Donations

Charity	Goal for 2022	Received in October	Received this Year	Drawing Winners
Quilts on Wheels	<b>1000 Quilts!</b>	42	194	♦ <i>Sandy Harris</i>
Walker Bags				♦ <i>Candy Joehrendt</i>
Quilts for Kids		66	148*	♦ <i>Agnes Summers</i>
Newborn Hats		14	45	
Flannel Receiving Blankets				
QFK Pillow Cases		12	188	
SAFE child/Green		72	189	
Comfort Quilts				

\* Plus 9 Afghans and 4 Blankets!

## Winter/Spring Workshops

**Five workshops are scheduled for the Winter/Spring 2022 - one will be virtual and four will be in person.**

**February Virtual Workshop, Catherine Redford – 2/26: Member \$30 & Non-member - \$45**



Catherine Redford was born in England where she learnt to knit and sew as a young girl. After relocating from London to Naperville, Illinois, she learned to quilt and never looked back. She's an award-winning quilter, an active member of her local guilds, and a popular teacher at the local and national level. Catherine is a frequent magazine contributor and has enjoyed being a guest on Quilting Arts TV. She is enjoying the resurgence of interest in handwork with a new embroidery book, *Butterfly Stitches*, published Fall 2020, and with two DVDs and a book on Modern Machine Quilting techniques, Catherine delights in finishing her own quilts on a domestic machine!

### **The Wool Applique Experience- an Introduction to Embroidery Embellished Wool Applique**

Learn the techniques required for successful whip stitch wool appliqué while working on a small piece that can be finished into a needle case or pin cushion. Use beautiful embroidery stitches to embellish and add further dimension to your project.



A \$32 kit provides all the fabrics, threads and needles you need. Just have scissors, a pencil and some pins handy!

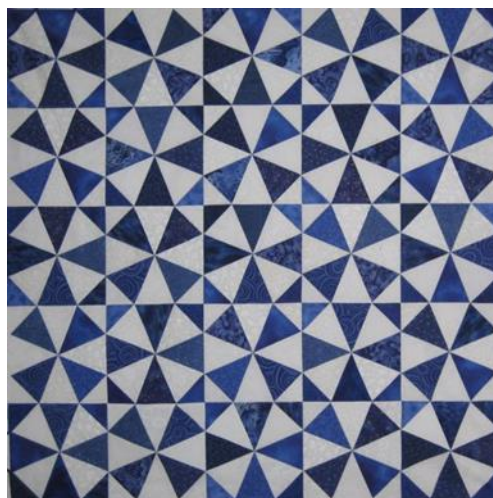


### April In Person Workshops, The Pizza Girls (The Quilters Gallery) - 4/15 and 4/16

The Quilter's Gallery was a full service quilt shop run by Patti Cline and Cindy Page in Charlotte, NC for over 25 years. They closed their shop in 2006 and are doing quilt shows, guild programs and workshops. They got the nickname, "The Pizza Girls" because of their fabric packaging. Their specialty is making kits, coordinating fabrics for maximum impact for each project and packaging them to look like pizzas.

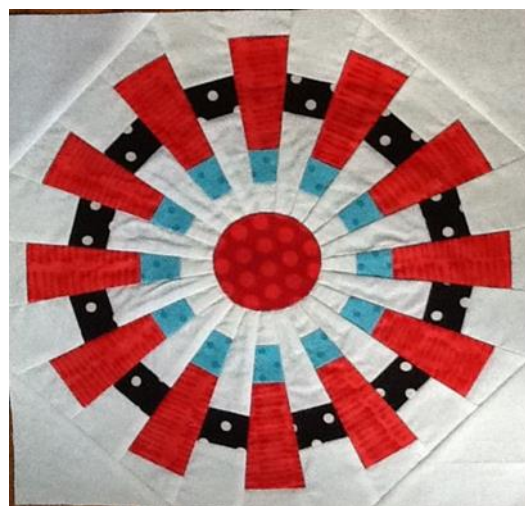
#### **Kaleidoscope - Friday 4/15: Member - \$55 & Non-member \$75**

This is a fabulous quilt with a lot of different looks. One ruler and one skill set can give you several different quilts. This quilt is a great design to use up your fat quarter stash. \$7.50 kit fee with 3 blocks that can be made into a table runner. Skill level - confident beginner.



#### **15 Degrees - Saturday 4/16: Member \$55 & Non-member \$75**

15 degrees is something a little different. It looks like curves, but everything is straight sewing. \$20 kit includes 15 degree ruler, 9" Stack and Whack), fabric strips for two blocks and an e-pattern. The class covers the basic technique and demo other wedge rulers - from miniature blocks to a 48" centerpiece. Appropriate for beginners.



## May In Person Workshops, Nina Clotfelter – 5/20 and 5/21



Nina has a passion for free motion quilting! “There is SO much freedom to do anything you wish and ability to express your creativity. Free motion quilting does NOT have to be an expensive endeavor! NO long arm is necessary! You can use your DOMESTIC sewing machine!”

Nina lives in Mobile Alabama and taught at the Houston Quilt Festival in 2021. She is an educator for WonderFil Specialty threads and loves to teach. “There is Nothing more fun and satisfying than to share what you love with others who then become successful! Traveling and teaching are two of my favorite things. My most favorite thing in life is meeting new wonderful quilters”

Beginning Free Motion Quilting – Friday 5/20: Member - \$55 & Non-Member \$75

Been afraid to try free motion quilting? Come let Nina hold your hand...you'll learn ALL the basics and more! You'll learn how much fun free motion quilting on your domestic machine can be! We REALLY do start at the very beginning! This class is for YOU! You'll come away with new found confidence and a sampler you can refer to for many different designs...that you'll create! Come on...let's start the fun! Enrollment is limited to 16 people.



**Ruler Work on a Domestic Machine – Saturday 5/21: Member \$55 and Non-Member \$75**

In this Beginner class you learn how to hold and work with RULERS on your domestic machine. You will start at the beginning with how to prepare the RULER and why this is important. You will work with a special RULER designed just for this class with 4 different shapes on it. By the end of class each student has successfully managed the RULER as well as learned to think with a RULER and created a block using the RULER. RULER Work is a GREAT way to enhance your Free Motion Quilting! \$50 supply fee includes: Class RULER, Drawing circle, Mechanical pencil, True Grips, Needle, Single hole needle plate trick  
\* **MUST** have a **Ruler Foot** for your machine.





## Our Committee Reports...

# Sunshine and Shadows

As *the Sunshine and Shadows* Chairperson, I will send out cards as needed to Guild members on behalf of the entire Guild. These cards are to express congratulations, get well wishes or condolences. Please contact me, Joni Amerson/Sunshine & Shadows, at:

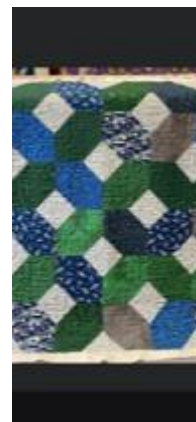
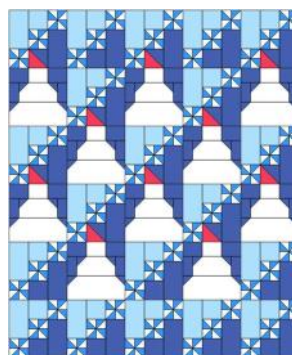
[information@capitalquilters.org](mailto:information@capitalquilters.org)



## 2021 Holiday Blocks

There are some fantastic blocks this year! We look forward to seeing all the finished blocks in December!

Contact Darlene Silverman ([jsilverman@nc.rr.com](mailto:jsilverman@nc.rr.com)) if you have any further questions.





# 2022 CQG Quilt Show Rules

## QUILT REGISTRATIONS MUST BE IN BY JANUARY 31<sup>ST</sup>, 2022.

1. Quilt Registration will open December 1, 2021, and will be closed 11:59 PM 1/31/2022 or when 175 quilts have been registered.
2. The preference is for registrations to be done online, at <https://capitalquiltersshow.org>. An email will be sent at the end of the registration process to confirm your registration. If you have a spam filter set up for your email, please whitelist [registration@capitalquiltersshow.org](mailto:registration@capitalquiltersshow.org) to ensure you get all of the communication regarding your quilt.
3. There is no fee for members of CQG to enter a quilt. Members may enter up to 3 quilts per category. Non-members must pay a \$10 fee per quilt to enter. Non-members may enter a total of 3 quilts with no more than 1 quilt in any one category.
4. Quilt to be judged must have been completed after 2017 and cannot have been previously entered in any CQG sponsored shows (specifically the 2018 quilt show or the 2021 quilt show).
5. In all categories the entrant must have worked on some part of the quilt. Except for duet and group categories, the quilts must be the sole work of the entrant.
6. Quilts entered for judging must have three layers joined by quilting. No false backs permitted; all quilting must be visible from the back of the quilt.
7. Each quilt must have its own entry form with picture. Entry forms will be accepted starting 12/1/2021 and must be received no later than 11:59 PM 1/31/2022.
8. The earliest date for turning in quilts will be the 2/17/2022 guild meeting and all quilts must be received by 2/27/2022. Additional drop off opportunities will be announced on Facebook and through the Guild email blast.
9. All entries must have a 4-inch sleeve attached to the top of the quilt. For large quilts the top edge of the sleeve should be a maximum of 90" from the bottom of the quilt so that any excess length drapes over the top of the hanging frame.
10. All entries must have a label sewn on the back lower right-hand corner of the quilt (as you look at the quilt from the back). The label must include the quilt name, the quilt maker's name and date completed.
11. All quilts must be able to be hung using standard hanging procedures. Do not send hanging rods or any kind of hardware or special hanging instructions. Framed quilts will not be accepted in this show.
12. Upon receipt of the quilt show entry form/s, a notification of entry will be emailed to entrant for each entry. After 1/31/2022 a quilt show entry number will be emailed for each entry. The participant must create a muslin label with that entry number on it. This entry number label should be securely affixed to the back lower right-hand corner of your quilt to cover the entire quilt label.
13. Do not send any accompanying material as it cannot be displayed.
14. Each quilt must be folded into a clear plastic bag. Please fold your quilt so that the quilt label can be viewed through the plastic bag.
15. While we endeavor to take the utmost care of your quilts, our committee will not be held responsible for any damage that may occur. Quilts entered with embellishments must be capable of withstanding normal folding and stacking without risking harm to your quilt or other quilts. It is your responsibility to have adequate insurance coverage for your quilt.
16. Quilt Show committee reserves the right to refuse a quilt if it is soiled, has pet hair or if it smells of smoke, perfume or pet odors. Quilts will be inspected upon receipt, and the owner will be contacted if the quilt is refused.
17. All quilts MUST be picked up between 6:00 P.M. and 6:30 P.M. at the end of the show. You are required to bring a printed copy of the Quilt Show email with the entry numbers. If someone else is picking up your quilt, they must have the paperwork.
18. The committee reserves the right to reassign quilts to another category if they are entered incorrectly. Entrants will be contacted if this puts their entries over the category limit to decide which quilt will be withdrawn.

*For more information, please see complete registration packet at the end of the newsletter.*

## Block Party

At the October guild meeting we had spooky returns! We received 8 ghosts, 9 bats and 10 pumpkins, for a total of 27 blocks. We mixed these three Halloween-y blocks together to give out three sets of 9 blocks to three lucky winners: Sandra Wilson, Bonnie Kurth, and Cindy Markhan. Congratulations! We can't wait to see what you make with them. And a shout out to Parker Yasur; in addition to submitting her blocks to Block Party, she used the directions for the three blocks we provided and added other Halloween shapes that she found on-line for an adorable Halloween quilt! If you were not able to return your blocks at the October meeting, plan to bring them to the next meeting or contact Jan to arrange to submit them. ([jchvatal2@gmail.com](mailto:jchvatal2@gmail.com)).

We distributed the directions and background fabric for a fall-themed maple leaf block to be returned in November. We gave a choice of either a green or cream fabric for the background. You are providing your own colors for the leaf and stem; what a good way to practice your color exploration and use more of your scraps! The directions are below in the Newsletter and are also posted on our Facebook page. If you would still like to participate in next month's drawing but did not pick up fabric at the meeting, contact Jan to get fabric; there are still green and cream swatches left.

Please return your finished maple leaf blocks at the **November** meeting. Fill out a slip for a chance to win the drawing and receive the blocks that were submitted. In June the Block Party participant who made the most blocks during the year will win a prize!

If you make an extra block for yourself each month (using your own fabrics) you will have twelve 12½ inch blocks to make yourself a sweet sampler quilt at the end of the year (for the August Wave, make four blocks to combine into a 12½ inch block)! We will have a show and tell and prize drawing next July for those who completed a sampler quilt top from the 12 blocks; more information on this later in the year.

**OR** you can pick and choose which months you want to participate in – you can do Block Party once for the year or every month – it's totally up to you!

If you have any questions about the instructions for the monthly blocks, or about how Block Party works, please contact me at [jchvatal2@gmail.com](mailto:jchvatal2@gmail.com).

Stop by to see us at the next meeting at the Block Party table!

Thanks,

Jan Chvatal

Cindy Prow



# Maple Leaf Block

## Materials Needed:

Background (provided for you for block party):

Two 5 inch squares, cut on diagonal

One 4 ½ inch square

One 4 inch square, cut on diagonal

Leaf: Can be one fabric or multiple fabrics in autumn leaf hues

Three 4 ½ inch squares

Two 5 inch squares, cut on diagonal

Stem: One 1 ¾ x 7 ½ inch rectangle

## Stem Square:

You need the two triangles of background cut from the 4 inch square, and the stem piece.

Align the stem strip on the diagonal of one triangle, as shown in diagram 1, with the strip extending past both ends of the triangle. Stitch and press toward the stem.

Align the square of the triangle on a cutting board. Mark lines at 4 ½ inches at each end of the strip as shown in diagram 2. Align the second background triangle so that the ends extend beyond the lines, as shown. Stitch the triangle to the stem. Press toward the stem.

Trim the stem on all sides to form a 4 ½ inch square, following the lines in diagram 3.

The finished square is 4 ½ inches, shown in diagram 4.



Diagram 1



Diagram 2



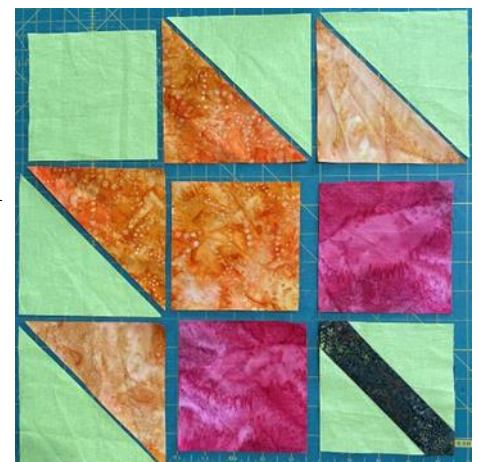
Diagram 3



Diagram 4

## Leaf:

Align pieces as shown to the right. Stitch triangles together; press to the leaf sides. Then stitch the squares on the top row together, and press toward the end pieces. Stitch the squares on the middle row together, and press toward the middle piece. Stitch the squares on the bottom row together and press toward the end pieces. Pin the top row to the middle row, aligning the seams; stitch and press toward the middle. Pin the top unit (two rows) to the bottom row, aligning the seams; stitch and press toward the middle.





# One Quilter's Experience

By Darlene Silverman

How does one ensure accuracy in cutting?

Part one: tools (As with pressing, this breaks down to tools and techniques.)

## Rotary cutters

It is so important to use a rotary cutter that feels comfortable in your hand. Too much cutting aggravates my arthritis. There are a number of cutters on the market, including those that claim to be ergonomic. You should consider trying out a number of them. This is one of many situations where having a group of quilting friends is helpful. You can borrow friends' rotary cutters to see how they feel in your hand. The only other place you can really try out a bunch of cutters is at a good-sized vendor mart or quilt show where manufacturers such as Ginger, Olfa and Fiskar will have vendor booths.

Make sure you always have spare cutter blades on hand and be willing to change to a new blade as soon as you feel the need to put additional pressure into your cut — a sure sign that your blade is getting dull. When cutting a huge project, I will start with a new blade and possibly replace it about half-way through. If you wait until the new one feels significantly better, you probably waited a bit too long. When changing your blades, it is easy to inadvertently take two blades out of the case and install them both in the cutter, because they are so thin. Watch for that. You will shred your fabric when you start cutting. Ask me how I know!

Also, have a care not to roll your blade over pins. Unlike sewing over pins, where you may damage your sewing needle, rotary cutting over a pin will create a nick on your blade that will cause a skip at each rotation of the blade. Annoying!

## Rulers

Reliable rulers are critical to accurate cutting. The markings have to be quite fine for accuracy, yet clearly visible against the background of the fabric. Angle lines for 30, 45 and 60 degrees are helpful. A 24" x 6" ruler is useful for making selvedge-to-selvedge cuts with a single fold. In addition, I have found it helpful to have a wide variety of sizes and types of rulers.

I have frequently heard the admonition to stick with one brand of ruler, so as to ensure consistency when switching back and forth. I do not follow this advice. I am not brand loyal with rulers. My favorite brand has changed over time, but I do not cease using my old rulers as I add new tools to my collection. I have never had a problem with consistency of measurement across brands. (And I am notoriously finicky!) If you are uncertain, my advice would be to test your measurements across brands using paper before making regrettable mistakes with fabric.

There are so many specialty rulers on the market that can make specific tasks easier or that can make specific blocks easier to make. You have to decide whether that advantage is worth the not-insignificant cost of each new ruler. One question to ask yourself is whether and how often you might use this ruler again. (Again, the advantage of having close quilting friends is the possibility of borrowing a ruler, either in lieu of buying it or to help you determine whether it is worth buying.)

It is wasteful, frustrating and potentially dangerous for a ruler to slip while you are cutting. One thing I have found makes a huge difference is using a ruler with a non-slip surface on the fabric side. Some brands can be purchased with this feature built-in and some can be modified post-market with a clear film, tape or dots that can be applied to the fabric side of any brand of ruler, helping to prevent slippage.

#### Surface, etc.

A self-healing mat on a surface at kitchen-counter height (standard 36", but whatever works best for you), excellent lighting, and a good pair of reading glasses are all essential for me.

Do not assume that the markings on your mat can be used to accurately measure distances between cuts. If you want to be able to rely on your mat markings, be sure to test them first against an accurate ruler. Depending on the brand of mat, these measures can be off — and even a little off compounds with each inch you are measuring. (Cutting an 8 1/2" background square? A 1/16" inaccuracy per inch means an error of over 1/2"! I use mat lines for placement and alignment only.

Coming up: How does one ensure accuracy in cutting? Part two: techniques

**Special Thanks to:**  
**Broken Needle**  
**NC State Fair**  
**Cheryl Porter**  
**(and all the other**  
**wonderful sponsors I**  
**may have missed!)**  
**for donating door**  
**prizes!**

#### **Show and Tell**

*And the  
Winners are...*

**Show and Tell drawing winner: Lynn Farrow**  
**First Time Show and Tell drawing winner Donna Bergman**

**Don't see your name on the list? Be sure you sign your name on  
the Show & Tell Form**

**Name Tag Winners: Carol Swanson and Vicki Price**

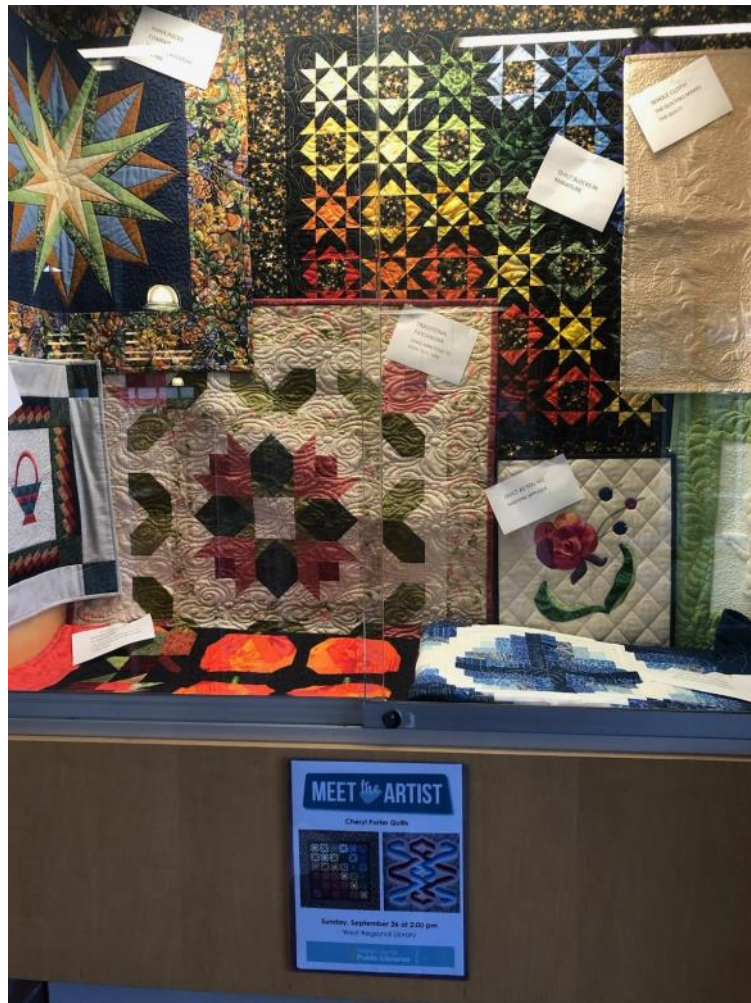
Our thanks to all the men  
and women who have served  
our country and protected  
our freedoms



[This Photo](#) by Unknown Author is licensed under [CC BY](#)

## Community Outreach

On Sunday, September 26, 2021, Cheryl Porter took part in the Wake County 'Meet the Artist' program at the West Regional Library. We did not get a picture while Cheryl was presenting, but here is a picture which was displayed at the library for around a month! It was a great way to show the visitors a wide variety of techniques.



Lynne Farrow has offered to be 'Meet the Artist' at the Eva Perry Library (Apex) on Tuesday, November 9th from 2:30-3:30 PM. She also will have a display case showing her artwork at Eva Perry Library from Tuesday, November 2th-16th. If you happen to be in the area, please stop by to see Lynne's display and support her on November 9th!

If you are interested in taking part in one of these programs, please let me know - [vbnugent@gmail.com](mailto:vbnugent@gmail.com). - Ginny Nugent



# Our Common Threads

By Lisa McLaughlin

*This month's submission comes from Darlene Silverman. As you know, Darlene has been with our guild for many years in many different roles. I am always amazed by her work and was quite surprised she wasn't born with a sewing needle in her hand!*



I do not have a family history of quilting. My grandmother and mother were gifted knitters and crocheters and, despite every effort on both their parts, both eventually had to admit defeat in ever teaching fumble-fingered me how to make anything other than a tangled mess out of yarn. Both did a bit of garment sewing and I remember that my Barbies were the best-dressed dolls in town thanks to my grandmother. Like virtually every girl of my generation, I learned the rudiments of sewing. I earned a girl scout badge in sewing. It was actually part of the junior-high curriculum back in the day. I spent a summer learning from one of my cousins, who was very much into garment sewing and who got me interested as well. Years later, I made my kids Halloween costumes and high school formal ball gowns for my daughter.

Quilting was not on my radar until, when my kids were young, I had the good fortune to have a good friend and neighbor who is an excellent and enthusiastic quilter. Maeve repeatedly pressed me to try my hand at quilt-making. She kept telling me that it would appeal to my math-brain. I did not listen to her and it was not until I moved away from Maeve (who would have been such a valuable resource for a newbie!) that I found myself in a shop and saw a sampler quilt on the wall with a sign indicating that a class for beginners would be starting soon. Why not? By this time my kids were older and I was a bit at loose ends. It was the beginning and I have not stopped since. Maeve enjoys telling me that she told me so and I have told her that she could take both credit and blame for all that has followed.

Most helpful to me in my quilting journey have been my bee-mates. I have learned from books, magazines, classes, t.v. shows and various on-line sources, but without question I have learned more from the ladies of my bees. They continue to be my best source of inspiration and encouragement.

*Thank you Darlene! Your beautiful work continues to encourage us all. And thank you for volunteering to submit your story.*

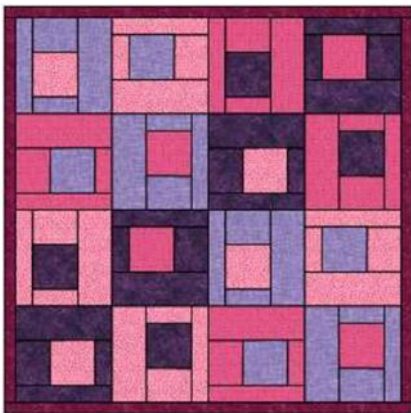
*Who else out there has a story to tell? Who would you like to hear from. Let me know in the poll on Facebook and I'll do my best to get their quilting history.*

# Comfort Quilts

## Back By Popular Demand!!

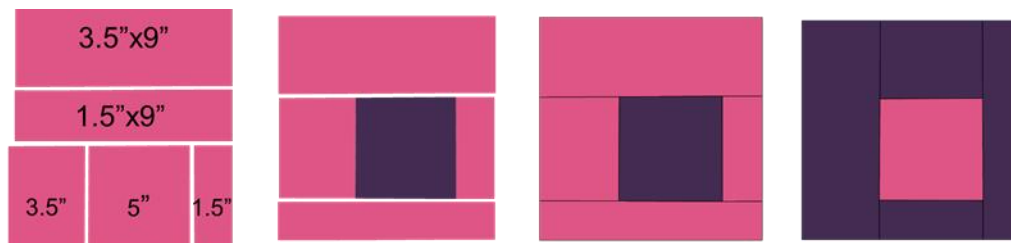
On Saturday, November 13th Anna will be hosting our second Comfort Quilt Workshop via Zoom. Roberta has done it again with a quick and easy pattern for us to complete. Can't stay the whole day? Join us for as long as you can! Every quilt matters and we would love to see you.

If you would like to register for this FREE event, please send an email to [information@capitalquilters.org](mailto:information@capitalquilters.org) and a link will be sent to you.



- 4 - 10" x WOF strips or 16 10" squares
- 4 - 1 1/2" x WOF border strips
- 4 - 2 1/2" binding strips
- 45" x WOF backing

From each of the 10" strips, cut 4 - 10" squares to create 16 - 10" squares. Pair the squares with contrasting squares to make 8 pairs of 10" squares. Cut each pair in half. Cut one 5"x10" strip pair into 5" squares, 1 1/2"x5" strips and 3 1/2"x5" strips. Trim the other 5"x10" strip pair into a 9" strip and then cut to make 1 1/2" x 9" and 3 1/2" x 9" strips.



Arrange the pairs with a 5" square with its contrasting fabric strips. Sew strips 1 and 2 to 5" square and then strips 3 and 4 as numbered above to make 8 pairs. Place the 16 resulting 9" squares in a 4 by 4 grid, rotating blocks as desired. Sew rows together, add side borders and top and bottom borders. Layer, quilt, and bind.

## **This Month's Meeting:**

November 17

# Final Sales of the Holiday Blocks

## And...

# The Holiday Bazaar!

Along with our regular fun filled activities! Hope to see you then!



### **INCLEMENT WEATHER POLICY**

***Please remember the Capital Quilters Guild meetings follow***

***Wake County Schools' closings:***

If schools close early or all day we will not meet.

If afterschool activities are cancelled we will not meet.



## To place an ad in the *Thimbleful Newsletter*:

Email your ad to Lisa McLaughlin @ [scarletnewfie@gmail.com](mailto:scarletnewfie@gmail.com) and mail a check payable to:  
**Capital Quilters Guild.**

Ads are due by the third Thursday of the month for the next month's issue.

\$5—Classified  
\$5—Business Card  
\$10—Quarter Page  
\$20—Half Page

Capital Quilters Guild  
PO Box 20331  
Raleigh, NC 27619



**Love Bug**  
·LONGARMING·

Carrie Hauser  
Longarm Quilting Services

Visit: [www.lovebuglongarming.com](http://www.lovebuglongarming.com)  
Call/Text: 919-945-9195  
Email: [lovebuglongarming@gmail.com](mailto:lovebuglongarming@gmail.com)

Find me on   [LovebugLongarming](https://www.facebook.com/LovebugLongarming)

Quilting  
Cats  
Studio



Faith Patterson  
Longarm Quilting Service

[quiltingcatsstudio.com](http://quiltingcatsstudio.com)  
 @quilting\_cats\_studio  
 @quiltingcatsstudio  
[quiltingcatsstudio@gmail.com](mailto:quiltingcatsstudio@gmail.com)



Visit us!

10-5 Mon – Sat

10 – 7 Tuesday

1-5 Sunday



935 N. Harrison Ave.

Cary, NC 27513

919-238-9739

[caryquilting.com](http://caryquilting.com)



Watch Us On  
  
Every weekday  
at noon!



4,000 Bolts of quilting cottons

6,000 items in inventory

950 square foot classroom





Whatever's  
Quilted  
Handi  
Quilter®



Introducing the 15" Moxie  
For under \$5000



**We've Got your Back!**

With more than 300 wide backs



**elna®**

We are here for all you quilting and sewing needs.  
During the pandemic, please call before coming

936 Gateway Commons Cir.  
Wake Forest 27587 888-546-0665

[www.WhateversQuilted.com](http://www.WhateversQuilted.com)

[Donna@WhateversQuilted.com](mailto:Donna@WhateversQuilted.com)

Near Lowes Food on SR 98



**@accuquilt**  
better cuts make better quilts®



## Retreat at Lake Gaston

Perfectly appointed for quilting groups  
with 12 beds, 2 kitchens, worktables,  
ironing stations, cutting counters, a mini-  
shop and more!

[RetreatLKG.com](http://RetreatLKG.com)





## TOP TO BOTTOM QUILTING

*Serving your machine quilting needs with  
End to End Specialty Quilting.*

*Many designs & threads for you to choose from.  
Drop offs/deliveries for local quilting plus shipping  
for out of town customers.*

[toptobottomquilting@outlook.com](mailto:toptobottomquilting@outlook.com)



Cindy Markham  
919-208-8941  
Raleigh, NC



## WISH UPON a QUILT

North Carolina's #1 Award  
Winning Dealership



## JANOME



8817 Westgate Park Drive  
Suite 104  
Raleigh, NC 27617

[www.wishuponaquilt.com](http://www.wishuponaquilt.com)

919 782-6363



## G's Quilt & Craft Retreat

Quilt & Craft the Day Away

710 Miller Rd  
Hillsborough, NC 27278  
[gsquiltandcraftretreat.com](http://gsquiltandcraftretreat.com)

Karen and Bob Gallegly  
[gsretreat@gmail.com](mailto:gsretreat@gmail.com)  
984-888-0932

### Ladybug's Cottage, Inc.

*Fabrics, Notions & More*

123 N Main Street ~ PO Box 1553 ~ Wendell, NC 27591

*Sew much fun with us...*

*Come shop for Quality Cotton Fabrics,  
Threads, Buttons, Zippers & more*

*Be sure to check the Specials page online for all our discounts.*



(919) 365-3636

[WWW.LADYBUGSCOTTAGE.NET](http://WWW.LADYBUGSCOTTAGE.NET)

*Ask us about the NC*







7076 Ramsey St./HWY 401  
Fayetteville, NC 28311  
(910) 630-3912 Mon– Sat 9 am–5 pm  
<https://www.lovingstitches.net>

We will be closed November 24th & 25th.

*Happy Thanksgiving!*

### Thankful Hearts SALE!

**Nov 26th-30th**

- Savings throughout the store!
- Up to 60% off select items.
- Special sale pricing on all Bernina & bernette machines. Financing available.



**ALL CAROLINAS  
SHOP HOP**

Hop your way to our store this month and enter our drawing for free gifts valued up to \$2,000! We'll be opened Sunday Nov 21st, 11-5, for your shop hopping convenience.

Come see the beautiful new B790 Plus Crystal Edition! It comes with over \$4,600 in free gifts!



made to create **BERNINA**



219 NC Hwy 98E Bunn, NC  
919-497-0828 • [www.thebrokenneedle.com](http://www.thebrokenneedle.com)

REGULAR SHOP HOURS

Tuesday-Saturday 10 am til 5 pm

Janome authorized dealer and service center.  
*Absolute lowest prices on Janome!*



**JANOME**

Fabric - Notions - Patterns - Kits - Classes



**Julianne Walther**

Professional Appraiser

[julianne@caryquilting.com](mailto:julianne@caryquilting.com)

935 N. Harrison Ave.

Cary, NC 27513

919.238.9739 ext. 5

[appraisemyquilt.com](http://appraisemyquilt.com)

## 2021 Guild Leadership Board Members

**President:** Anna Norris

**Vice President:** Sandy Wilson

**Secretary:** Marsha Tolley

**Treasurer:** Carolyn Wigmore

**Charity & Community Outreach:** Roberta Miller-Haraway & Ginny Nugent

**Communications:** Lisa McLaughlin

**Fundraising:** Irene Thomas

**Membership:** Betsy Proctor-Roose

**Teachers & Workshops:** Ann O'Brien

**Member at Large 1:** Cindy Prow **Member at Large 2:** Marie Grasso

## Committee Members

**Bee Keeper:**

**Block Party:** Jan Chvatal

**Holiday Blocks:** The Remnants Bee (Darlene Silverman)

**Hostesses:** Katie Greenwood & Alma Mellish

**Library:** Sherill Boyce & Wendy Ann Smith

**Quilts for Kids:** Kate Pearson & Maria Wall

**Quilts on Wheels:** Sue Hatch

**SAFEchild:** Vickie Peoples and Tiffany Harwood

**Secret Sew-ciety:**

**Social:** Maria Kleinman

**Sunshine & Shadows:** Joni Amerson

**Quilt Show:** Sue Ann Jatko & Nora Bailey



*To contact us, email: [information@capitalquilters.org](mailto:information@capitalquilters.org)*

# Upcoming Events!

## CQG Workshop Dates

- Nov. 13      **Comfort Quilt Workshop via Zoom.** Please register at the guild website, [information@capitalquilters.org](mailto:information@capitalquilters.org)
- Feb 26, 2022      **“The Wood Applique Experience—An Introduction to Embroidery Embellished Wool Applique”** A virtual workshop with Catherine Redford.
- Apr 15 & 16, 2022      **“Kaleidoscope” and “15 Degrees”** In-person workshops with the Pizza Girls of *The Quilters Gallery*.

## Quilt/Vendor Shows

- Mar 1-19, 2022      **Capital Quilters Guild Quilt Show.** For more information, please see entry information at the end of the newsletter.

## Other Events of Interest

*Let us know if there are any other events of interest you would like to see noted in our Newsletter.*





# Capital Quilters Guild Membership Form

July 1, 2021- June 30, 2022

Help us confirm that our records are accurate by completing all the information below:

Name: \_\_\_\_\_

Address: \_\_\_\_\_

City: \_\_\_\_\_ State: \_\_\_\_\_ Zip code: \_\_\_\_\_

Phone: \_\_\_\_\_ Email: \_\_\_\_\_

Birth Month \_\_\_\_\_ Birth day \_\_\_\_\_ (for member benefits)

Are you a new member? Yes \_\_\_\_\_ No \_\_\_\_\_

The Member Directory is published in print for a fee and available free on CQG member-only social media. Please check this box if you do NOT wish to be included in the directory ☐

Are you a member of CQG's Facebook page? Yes \_\_\_\_ No \_\_\_\_

If you are a member of a bee, what is the name of your bee? \_\_\_\_\_

If you would like to join a bee, tell us your preference (please circle ALL of your preferences): Day/Night Weekday/Weekend North/South/East/West/Any Region Art/Hand/Charity/other \_\_\_\_\_

## Membership Fees:

Please note that all members are required to pay dues. (Please circle your membership type)

Regular Membership ..... \$40.00

Quilters aged 70 or older (prior to, or on June 1, 2021)..... \$25.00

Junior Membership (18 years and younger; full scholarships are currently available).....~~\$25.00~~ 0.00

Printed CQG Membership Directory (to be picked up at the November meeting)..... \$5.00

Optional donation (tax deductible) .....\$ \_\_\_\_\_

**Please bring this form with payment to the next meeting or mail to:**

**Capital Quilters Guild**

**PO Box 20331**

**Raleigh NC 27619-0331**

Date \_\_\_\_\_ Check # \_\_\_\_\_ Cash \_\_\_\_\_ Credit Card (last 4 digits) \_\_\_\_\_ Total: \_\_\_\_\_

## Capital Quilters Guild- Workshop Registration Winter/Spring 2022

Name \_\_\_\_\_

Phone \_\_\_\_\_

Address \_\_\_\_\_

Email \_\_\_\_\_

Zoom Workshop – Member fee: \$30 Non-member fee: \$45  
In Person Workshop – Member fee: \$55 Non-member fee: \$75

<u>Teacher:</u>	<u>Class:</u>	<u>Date:</u>	<u>Amt: Cash/Ck#/Chg</u>
Catherine Redford	Zoom Wool Applique	2/26/22	
Quilters Gallery	In Person Kaleidoscope	4/15/22	
Quilters Gallery	In Person 15 Degrees	4/16/22	
Nina Clotfelter	In Person Beg. Free Motion	5/20/22	
Nina Clotfelter	In Person Beg Ruler Work	5/21/22	

Total: \_\_\_\_\_

\*\*\*\*\*

**Payment:** Due when you sign up. ( Payment with charge card/cash available at monthly guild meeting only.)

Make your check payable to : **Capital Quilters Guild**

**Mail your check and registration form to:**

Ann O'Brien  
1336 Holt Road  
Apex, NC 27523

**Location:** In person workshops will be held at  
**Highland United Methodist Church**  
1901 Ridge Rd Raleigh, NC 27607.

**Most Class hours: 9am-3:30pm Be sure to pack a bag lunch!**

**Refund Policy:** Full refund will be made if requested 30 days prior to the workshop. Without 30 days notice, you will only receive a refund if space can be filled from the waiting list. If not, you will receive a credit for a future class.

**Inquiries:** information@capitalquilters.org

**2022 Capital Quilters Guild Quilt Show March 18-19, 2022**

Entry forms will be accepted starting 12/01/2021. All entry forms must be received by 1/31/2022 at 11:59 p.m. Quilts may be turned in starting 2/17/2022. All quilts must be received by 2/27/2022. We prefer that you submit your entry online at <https://capitalquiltersshow.org/> Entries may be brought to a guild meeting or delivered to a committee member. Do not mail quilts. Please read all Quilt Entry Instructions for rules. Completed forms with pictures may be emailed to [registration@capitalquiltersshow.org](mailto:registration@capitalquiltersshow.org) or mailed to Nancy Honeycutt 6809 Lynnoak Dr Raleigh NC 27613. A SEPARATE ENTRY FORM MUST BE COMPLETED FOR EACH ITEM ENTERED.

Section A: Entry Identification (Please print or type, additional information may be attached.)

Name: \_\_\_\_\_

Email Address: \_\_\_\_\_ Phone\*\*: \_\_\_\_\_

Address: \_\_\_\_\_

Entry Name: \_\_\_\_\_

Pattern Name and Designer: \_\_\_\_\_

Entry made by: \_\_\_\_\_ Entry quilted by: \_\_\_\_\_

Size in inches: \_\_\_\_\_ width \_\_\_\_\_ length \_\_\_\_\_ perimeter

\*\* We want to be able to contact you the Saturday of the show.

Check one predominant quilting method:

- ☐ Hand quilted  
☐ Hand guided machine quilted  
☐ Computer guided machine quilted

This quilt was made from a kit: ☐ Yes ☐ No

This quilt is to be judged: ☐ Yes ☐ No Non-judged quilts will be displayed as space permits.

Description: \_\_\_\_\_

\_\_\_\_\_

\_\_\_\_\_

\_\_\_\_\_

Attach a photograph. Digital computer printout is acceptable. Photos are not returnable and are used for record keeping purposes only. The quilt must be recognizable by color and pattern in the photo.

Class or Challenge (if any) \_\_\_\_\_

Section B: Entry Category Number and Name:

\_\_\_\_\_

Please review the category list and select carefully. The committee reserves the right to reassign a quilt to a different category if deemed appropriate. RETURN THIS PAGE AND THE PHOTO TO Nancy Honeycutt 6809 Lynnoak Dr Raleigh , NC 27613 or email to [registration@capitalquiltersshow.org](mailto:registration@capitalquiltersshow.org)



## **Quilt Show Categories**

100, Individual, Pieced, Computer-guided machine quilting  
200, Individual, Pieced, Hand-guided machine quilting  
300, Individual, Mixed/Other techniques, Computer-guided machine quilting  
400, Individual, Mixed/Other techniques, Hand-guided machine quilting  
500, Individual, Hand Quilted, Any Technique  
600, Duet, made by 2 persons, all techniques  
700, Group, made by 3 or more persons, all techniques  
800, Modern  
900, Miniature (no side larger than 30" on any side and small in scale)  
1000 Art  
1100 Pictorial  
1200, Wearable Art and Accessories  
1300, Special Exhibit – CQG President's Challenge 2021-22 entries, all techniques

### **Technique Definitions:**

Pieced: Piecing is the predominant technique in amount and effect.

Mixed: A relatively even amount of piecework and appliqué.

Other: One special technique is used to develop the design of the top, such as applique, whole cloth, surface design, crazy quilt, cathedral window, embroidery, yo-yos, etc.

Computer-guided machine quilting: ANY quilting with programmed motifs produced without the quilter guiding the quilting manually

Hand-guided machine quilting: Quilted on any machine where the quilter manually guided ALL quilting.

### **Category Definitions:**

*Individual Quilt: All elements of assembling, quilting and binding the quilt are done by the individual entering the quilt.*

*Duet Quilt: Two people involved in the completion of the quilt. Includes quilting by a person other than the maker of the top. Includes all techniques.*

*Group Quilt: More than two people involved in the completion of the quilt. Includes all techniques.*

*Modern: Inspired by modern design. Includes but not limited to the use of bold colors and prints, high contrast and graphic areas of solid color, improvisational piecing, minimalism, expansive negative space, and alternative grid work. Also, Modern Traditionalism, the updating of classic quilt designs.*

*Miniature Quilt: Completely scaled down in all features from a large quilt design. No larger than 30" per side. Block size no larger than 4" finished. All techniques included in this category.*

*Pictorial Quilts: Has a visual representation of an image on the quilt surface. It may include, but is not limited to, faces, animals and/or landscapes. Includes all techniques.*

*Art Quilt: Your ORIGINAL design reflecting innovative construction and design techniques, theme or subject matter, and/or materials. No commercial patterns or copies of previous works. Quilts must be made of some fabric, have three layers, and contain quilting. No commercial patterns or copies of previous works.*

*Wearable Art and Personal Accessories: Designed to be worn/used (such as clothing, totes, purses, planner covers, etc.) Includes all techniques. No pillows, table runners or other home furnishing items.*

*SPECIAL EXHIBIT CQG President's Challenge 2021-22: CQG Members were given a piece of fabric and instructions to make an 18 x 36 quilt of their choice, with the fabric running across the quilt in some manner. These quilts are to be completed so that a 3 inch section of the distributed fabric occurs on each side of the quilt, so they can be hung together in a group display.*

## 2022 Capital Quilters Guild Quilt Show Rules

### QUILT REGISTRATIONS MUST BE IN BY JANUARY 31<sup>ST</sup>, 2022.

Quilt Registration will open December 1, 2021, and will be closed 11:59 PM 1/31/2022 or when 175 quilts have been registered.

The preference is for registrations to be done online, at <https://capitalquiltersshow.org>. An email will be sent at the end of the registration process to confirm your registration. If you have a spam filter set up for your email, please whitelist [registration@capitalquiltersshow.org](mailto:registration@capitalquiltersshow.org) to ensure you get all of the communication regarding your quilt.

There is no fee for members of CQG to enter a quilt. Members may enter up to 3 quilts per category. Non-members must pay a \$10 fee per quilt to enter. Non-members may enter a total of 3 quilts with no more than 1 quilt in any one category.

Quilt to be judged must have been completed after 2017 and cannot have been previously entered in any CQG sponsored shows (specifically the 2018 quilt show or the 2021 quilt show).

In all categories the entrant must have worked on some part of the quilt. Except for duet and group categories, the quilts must be the sole work of the entrant.

Quilts entered for judging must have three layers joined by quilting. No false backs permitted; all quilting must be visible from the back of the quilt.

Each quilt must have its own entry form with picture. Entry forms will be accepted starting 12/1/2021 and must be received no later than 11:59 PM 1/31/2022.

The earliest date for turning in quilts will be the 2/17/2022 guild meeting and all quilts must be received by 2/27/2022. Additional drop off opportunities will be announced on Facebook and through the Guild email blast.

All entries must have a 4-inch sleeve attached to the top of the quilt. For large quilts the top edge of the sleeve should be a maximum of 90" from the bottom of the quilt so that any excess length drapes over the top of the hanging frame.

All entries must have a label sewn on the back lower right-hand corner of the quilt (as you look at the quilt from the back).

The label must include the quilt name, the quilt maker's name and date completed.

All quilts must be able to be hung using standard hanging procedures. Do not send hanging rods or any kind of hardware or special hanging instructions. Framed quilts will not be accepted in this show.

Upon receipt of the quilt show entry form/s, a notification of entry will be emailed to entrant for each entry. After 1/31/2022 a quilt show entry number will be emailed for each entry. The participant must create a muslin label with that entry number on it. This entry number label should be securely affixed to the back lower right-hand corner of your quilt to cover the entire quilt label.

Do not send any accompanying material as it cannot be displayed.

Each quilt must be folded into a clear plastic bag. Please fold your quilt so that the quilt label can be viewed through the plastic bag.

While we endeavor to take the utmost care of your quilts, our committee will not be held responsible for any damage that may occur. Quilts entered with embellishments must be capable of withstanding normal folding and stacking without risking harm to your quilt or other quilts. It is your responsibility to have adequate insurance coverage for your quilt.

Quilt Show committee reserves the right to refuse a quilt if it is soiled, has pet hair or if it smells of smoke, perfume or pet odors. Quilts will be inspected upon receipt, and the owner will be contacted if the quilt is refused.

All quilts MUST be picked up between 6:00 P.M. and 6:30 P.M. at the end of the show. You are required to bring a printed copy of the Quilt Show email with the entry numbers. If someone else is picking up your quilt, they must have the paperwork.

The committee reserves the right to reassign quilts to another category if they are entered incorrectly. Entrants will be contacted if this puts their entries over the category limit to decide which quilt will be withdrawn.

**Holiday Bazaar Bid Sheet**

**Item #:** \_\_\_\_\_

**Describe Item:**

\_\_\_\_\_

**Return to Artist:** \_

**Donating Artist**

\_\_\_\_\_

**Donate:** \_\_\_\_\_

**Bidder's Last Name, First Name**

**Starting Bid** (raise by \$1)

**1.** \_\_\_\_\_

\_\_\_\_\_

**2.** \_\_\_\_\_

\_\_\_\_\_

**3.** \_\_\_\_\_

\_\_\_\_\_

**4.** \_\_\_\_\_

\_\_\_\_\_

**5.** \_\_\_\_\_

\_\_\_\_\_

**6.** \_\_\_\_\_

\_\_\_\_\_

**7.** \_\_\_\_\_

\_\_\_\_\_

**8.** \_\_\_\_\_

\_\_\_\_\_

**9.** \_\_\_\_\_

\_\_\_\_\_

**10.** \_\_\_\_\_

\_\_\_\_\_

**11.** \_\_\_\_\_

\_\_\_\_\_

**12.** \_\_\_\_\_

\_\_\_\_\_

**13.** \_\_\_\_\_

\_\_\_\_\_

**14.** \_\_\_\_\_

\_\_\_\_\_

**15.** \_\_\_\_\_

\_\_\_\_\_