



# The Thimbleful

Capital Quilters Guild

Raleigh, North Carolina

September 2021

## Next Meeting

Thursday, September 23, 2021

6:30 Social

7:00 Meeting Begins

**Location:** Temple Beth Or  
5315 Creedmoor Road  
Raleigh, NC 27612

## Bring:

**Name tag**

**Membership pin**

**Show n Tell Sharing Sheets**

**Comfort Quilts**

**New Membership Forms and Dues**

**Fall Workshop Sign-up Sheet**

**Any handwork**

**And of course....**

**A Quilting Friend!**

## In This Edition...

- Meet the Folks at “The Green Chair Project.”
- Block Party is Back!
- New Segment: Our Common Threads

## Table of Contents

|         |                             |
|---------|-----------------------------|
| Page 2  | President's Message         |
| Page 3  | President's Challenge Rules |
| Page 4  | From the Board              |
| Page 7  | This Month's Meeting        |
| Page 8  | One Quilter's Experience    |
| Page 11 | Block Party                 |
| Page 14 | Holiday Blocks              |
| Page 15 | Our Common Threads          |
| Page 16 | Our Advertisers             |
| Page 20 | Guild Leadership            |
| Page 21 | Upcoming Events             |
| Page 22 | Guild Forms                 |



## President's Message

Hello Everyone!

August was another wonderful and busy month! The guild welcomed Jessie Taliaferro from Quilt Rehab to speak to us about vintage quilts. Members were welcome to bring their own vintage quilts for show-n-tell. It was fascinating and I learned so much! Thanks to everyone who shared their quilts.

September is back to school time which is true for the guild as well. On September 25<sup>th</sup>, the guild is offering its first virtual class of the year, Notan. It is an art form that focuses on the play between negative and positive space. I have spent time learning more about it on Pinterest which has also provided some inspiring ideas. There is still room in the class, and I encourage you join us. In my opinion, there is always something new that can be learned in any class that can be applied to your quilts later.

Holiday Block is also underway! It is one of my favorite guild activities and it is my hope that the event will happen this year. Applications were due September 1 but reach out to Remnants Bee to see if there is still an opportunity to get involved. In a nutshell, groups sponsor blocks which are sold as kits at the October and November Guild Meetings for \$2 each. In December, all blocks are turned back in, and a drawing is held to pull winners for the blocks. To win, you just need to purchase a block from a group, turn in a completed block and wait to see if you are the winner. However, none of it is possible without guild members sponsoring a block themselves or with a small group of people.

Finally, I want to thank everyone for their kindness and support for wearing their mask at the last guild meeting. The board and I are committed to holding guild meetings this year whether in-person or virtually. This hybrid model is new to us as a group but we continue to have multiple plans in place to make sure we can enjoy as many activities as possible.

Happy Quilting!

Anna



# The President's Challenge

## A Ribbon Runs Through It

The Rules....

1. The finished quilt must measure 18" wide by 36" long.
2. Each member will be provided a piece of fabric which must enter on the left side of the quilt at 3" wide and exit on the right side of the quilt at 3" wide. This piece can be pieced, appliquéd or be attached by any method and can change width as long as it is 3" on the edges. It must run to the edge so you may want to consider finishing your edges by adding facing or using a pillowcase instead of binding. More tips and tricks to come.
3. Quilts will be due by the 2022 Quilt Show since we will want to display them there. Exact due dates will be published once the quilt show committee publishes them. Please know that having your project judged is OPTIONAL so please participate.



## From The Board

### 2022 Raffle Quilt

**Attention All Members!** The guild needs your help. We are looking for volunteers to help man the raffle quilt table at the following events:

September 25<sup>th</sup>: Farmers Market Fall Festival, Cary  
 September 10<sup>th</sup> & 11<sup>th</sup>: Beer, Bourbon & BBQ Festival, Cary.  
 October 2<sup>nd</sup>: Railroad Days, Selma  
 October 7<sup>th</sup>: Uncle Eli's Quilting party, Graham  
 October 15<sup>th</sup> & 16<sup>th</sup>: Hearts and Hands Quilt Show, Sanford  
 November 6<sup>th</sup>: Fest in the West, Cary  
 November TBD: Lafayette Village, Raleigh  
 January 14 & 15, Fiber Art Market Place, Sanford  
 March 18<sup>th</sup> & 19<sup>th</sup>: Capital Quilters Guild Quilt Show



### Spotlight on Comfort Quilt Donations

| Charity                    | Goal for 2022       | Received in August | Received this Year | Drawing Winners  |
|----------------------------|---------------------|--------------------|--------------------|--|
| Quilts on Wheels           | <b>1000 Quilts!</b> | 40                 | 83                 | Congratulations to:<br><br>- Millie Bozek<br>- Marilyn Murray<br>- Christine Haarvig |
| Walker Bags                |                     |                    |                    |  |
| Quilts for Kids            |                     | 27                 | 61                 |  |
| Newborn Hats               |                     |                    |                    |  |
| Flannel Receiving Blankets |                     |                    |                    |  |
| QFK Pillow Cases           |                     |                    | 176                |  |
| SAFEchild                  |                     | 29                 | 40                 |  |
| Comfort Quilts             |                     |                    |                    |  |
| Hurricane Relief Quilts    |                     |                    |                    |  |





## Fall Workshops

### **September Virtual Workshop, Dawn Piasta – 9/25:** **Member - \$30 & Non-member - \$45**

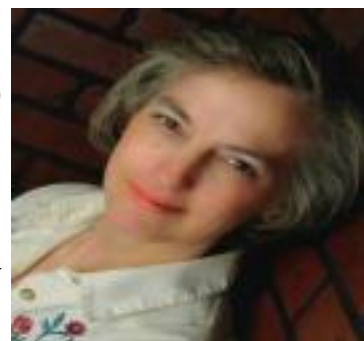
Dawn Piasta is a fibre artist, graphic designer and teacher living in Dauphin, Manitoba, Canada. Dawn's quilts have travelled extensively through various exhibits in the United States, Canada & Europe. Dawn is a juried member of Western Canada Studio Art Quilters Association (SAQA), a member of the **Fibre Arts Network of Canada**, and the **Fibre Arts Network of Manitoba (TFAM)** and the Manitoba Representative of the Canadian Quilters Association. Visit Dawn's portfolio at [www.dewpointarts.com](http://www.dewpointarts.com)



**Notan – Saturday 9/25:** Nōtan is a Japanese design concept involving the play and placement of light and dark elements as they are placed next to the other in the composition of art and imagery. Our goal during this fun and creative workshop is to create a NOTAN design using fabric; remove negative spaces from the positive space then flip the negative space so that it mirrors the positive space; then finally, using your preferred raw-edge applique technique; affix all pieces onto the background. Students are provided a base pattern however individual designs are encouraged. Basic quilting supplies are needed, one yard of each a dark and light quilting cotton such as batik and Steam a Seam 2 fusible. A full supply list and basic pattern are provided.

### **October In Person Workshops, Julia Graves – 10/22 and 10/23**

Julia Graves started her quilting business, Special Occasion Quilts LLC, in 2007 and teaches, lectures, designs patterns, makes commission quilts, longarms for others and sells & services APOS longarm machines. Both of Julia's workshops in October will focus on the use of color. Julia is a Gem Affiliate teaching the gorgeous gem patterns by MJ Kinman - Textile Artist, has had quilts published in books by Gloria Loughman, Katie Pasquini Masupust and MJ Kinman, was an Artist in Residence at Empty Spools in 2019, and will be teaching at Empty Spools in 2022. Visit her gallery on her website at <http://www.squilts.com>. Julia lives in Leesburg Virginia.



### **Tricks with Transparency – Friday 10/22: Member - \$55 & Non-member - \$75**

Play with fabric and learn the tricks to create transparency effects in this simple to piece but entertaining to look at quilt. You will use these color principles in many future quilts to create depth and interest!

- \$8 pattern fee
- You will leave class with a start on a layout for your strips, an understanding of how to achieve the transparency effect, and an understanding of how to piece the block and finish the quilt.
- Appropriate for all levels.

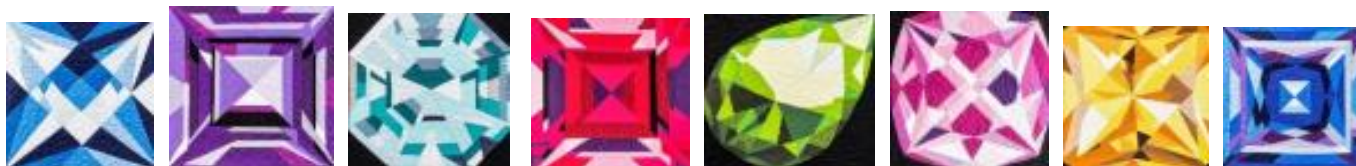


## Gemstone Bling – Saturday 10/23: Member - \$55 & Non-member - \$75

Create your own sparkling gem using the same techniques that artist and designer MJ Kinman has used to create her giant gem quilts for over 20 years. MJ's gem quilts have been featured in *Quilting Arts Magazine* and *McCall's Quilting Magazine*, and she's been on *Quilting Arts TV* and *The Quilt Show.com* with Alex Anderson and Ricky Tims.

- Pattern (Julia brings for in-person; \$18+tax, payable at class).
- Select your birthstone, or any gem you think is lovely. Finished size is 17".
- Fabric bundles are available from Julia, featuring Fat Quarter solids from Paintbrush Studios in carefully gradated values that will make your gem shine and glow! \$2.25+tax/FQ needed ➤ For those wanting to provide their own fabric - Use solids, blenders or tone on tones. Distinct patterns will detract from the faceted effect. There are color chips in the pattern to help you select your fabrics.
- This isn't your typical foundation paper piecing. Freezer paper templates (included in the pattern) are ironed to the right side of your fabric and can be easily removed after piecing. And best of all, these patterns don't require absolute precision, so you can relax and enjoy every aspect of making your gem
- Skill Level: Confident Beginner

**Sign up by 9/30/21 to ensure you get your first choice of Gemstone!**



## Sunshine and Shadows

As *the Sunshine and Shadows* Chairperson, I will send out cards as needed to Guild members on behalf of the entire Guild. These cards are to express congratulations, get well wishes or condolences. Please contact me, Joni Amerson/Sunshine & Shadows, at:

[information@capitalquilters.org](mailto:information@capitalquilters.org)



## This Month's Meeting:

**Our Guest Speaker: The Green Chair Project.** We have recently began donating quilts to this group. Come and hear more about them and how we can support their mission.



**Show and Tell:** We ran a little short for time last month but will make up for that in this month's meeting. If you couldn't show your quilt last time, bring it back to share along with anything else you are working on.



**And Remember...**The City of Raleigh has issued an Emergency Proclamation mandating the use of face coverings for indoor gatherings within the City. In compliance, the Guild requires that everyone attending Thursday's meeting, whether fully vaccinated or not, must wear a mask. If you have a medical exemption from wearing a mask, you are required to wear a face shield. We appreciate your kindness and cooperation.



# One Quilter's Experience

By Darlene Silverman

Disclaimer: I do not hold myself out as an expert. I know that many of you know so much more than I do. I share my experience in the hope of helping newer quilters as well as to stimulate conversation among more experienced quilters. I welcome feedback and differing views, as we are all on this journey together and can only benefit from hearing each other. (If you are reading this in the newsletter, please weigh in on Facebook.)

## What are the best practices for pressing?

This is a subject that I think gets short-shrift, but getting this process right means more accurate piecing and makes ongoing steps easier. Taking short cuts at the different stages of construction just makes it more likely that you are going to have problems to deal with down the line. A lot of the effort I am willing to put into what may seem the little things is about subsequent frustration-reduction.

### Part one: pressing seams open vs. pressing seams to one side.

Traditionalists will almost always press seams to one side. Many in the modern quilt movement advocate pressing seams open. I almost always press to one side, however there are specific situations where I press open.

One reason for the traditional stance is that, once upon a time, batting was far less stable. Batting is now scrimmed or otherwise made sufficiently stable that bits of batting are far less likely to “beard” — to poke out through the seam gap between the fabrics. That being said, bearding can still happen even with modern battings, particularly when a quilt is used and abused. Think baby quilts in particular, but some people can be fairly abusive of lap and bed quilts. (Jules sleeps like he is engaging in a vigorous wrestling match with his bedding.) Table toppers and wall-hangings are generally safe from bearding.

Pressing choices are primarily about:

1. managing the bulk that results from piecing,
2. dimensionality,
3. quilting.

Modern quilters contend pressing seams open will cause a quilt to be flatter and less bulky (thus easier to quilt), since each side of a seam will have two layers of fabric instead of one layer to one side and three to the other. Then when you then sew a cross seam, the bulk increases.





This issue is easily dealt with when seams meet at 90 degrees and they are pressed to alternate sides, “nesting” them against each other allows you to make the cross seam very accurate. You can then pick out a few cross stitches and “spin” the seams around. This distributes the bulk evenly around the crossing point.



It is less straightforward when seams meet at an angle other than 90 degrees. In this photo you can see that I off-set the angled seams to reduce the bulk. I then decided to press the central seam open. As a precaution against bearding, I set my stitch length to 2.0





Also consider dimensionality in the design. I try to take advantage of the dimension created by pressing to one side to help sell the dimensionality of the design. The side 3-layers thick pops out and the side 1-layer thick recedes. I hope that you can tell in this photo that the brown spokes lie on “top” of the light neutral background. Also each spoke lies on top of the next spoke. (You can further sell this with the quilting. The more dense the quilting, the more the fabric is flattened and surrounding areas — less densely quilted — poof out.)



You will also want to consider how you are planning to quilt. Another advantage to pressing to one side is that it creates the “ditch” into which one may want to stitch in the quilting process. If one presses the seams open, quilting along the line where the two fabrics meet would mean stitching on stitching. While I have heard varying opinions on this, I worry that it can be damaging to the quilt. The process of sewing might damage the thread of the existing seam line and the pressure put on that seam over time could cause it to break down. (Although it is a topic for another time, I’ll just say here that I almost always start my quilting by doing some stitching in the ditch. It acts to stabilize the quilt and lends a crispness to the design by [literally] underlining the design.)

Look at photo #2 again. I thought it through before sewing the central seam and decided that I would not want to stitch in the ditch along that particular seam, so went for the reduction in bulk option and pressed the seam open.

It helps to keep pressing in mind as you go along. Most pattern designers will tell you how to press. If they don’t or if you are making your own way without written instructions, consider doing what I do. When I draft out the quilt (either on graph paper or on the computer), I mark it up to show the direction in which I will press the seams. Again, I go for a little more effort up front for a lot less frustration later.

Coming up: What are the best practices for pressing? Part two: the mechanics of pressing

(Suggestions for future topics gratefully accepted.)

## Our Committee Reports...

### Block Party

We are so excited to be coordinating Block Party for the Guild! We will have a monthly theme that reflects some event or idea for the month. All the blocks for the year will be 12 ½ inch squares (12-inch finished size). We are providing two blocks this month to catch up due to missing July. We have a block for August and a block for September; both are to be returned at the September Guild meeting. In September we will hand out the October blocks, and from then we will continue to work a month ahead through June.

Our August block is Wave, since many of us would rather be at the beach while it is so very hot in August! Each block is a 6 ½ inch square. The quantities in the directions will create **two** 6 ½ inch blocks, which is what we would like you to make for the guild block party.

Our September block is an apple, because Johnny Appleseed day is in September. You can make a traditional red apple, or a green or yellow apple.

Please return your finished Wave and Apple blocks to the **September** meeting. Fill out a slip for a chance to win the drawing and receive the blocks that were submitted. In June we will have a prize drawing among those members who made the most blocks throughout the year.

If you make an extra block for yourself each month (using your own fabrics) you will have twelve 12 ½ inch blocks to make yourself a sweet sampler quilt at the end of the year (in August make four blocks to combine into a 12 ½ inch block)! We will have a show and tell and prize drawing next July for those who completed a sampler quilt top from the 12 blocks; more information on this later in the year.

If you have any questions about the instructions for the monthly blocks, or about how Block Party works, please contact me at [jchvatal2@gmail.com](mailto:jchvatal2@gmail.com).

Stop by to see us at the next meeting at the Block Party table!

Thanks,

Jan Chvatal

Cindy Prow



# Wave Block

## Materials Needed (for two 6 1/2 inch blocks):

Light teal fabric: 7 1/2 by 16 1/2 inch piece of fabric (or equivalent) Cut one 1

5/8 inch x 7 inch strip

Cut two 2 1/2 inch squares Cut two

3 1/2 inch squares Cut two 4 1/2 inch squares

Dark teal fabric: 7 1/2 x 16 1/2 inch piece of fabric (or equivalent)

Cut one 1 5/8 inch x 7 inch strip Cut two

2 1/2 inch squares

Cut two 3 1/2 inch squares Cut two

4 1/2 inch squares

Cut all squares on the diagonal to form triangles.

Note: All pieces are larger than required and will be trimmed down to size after each step

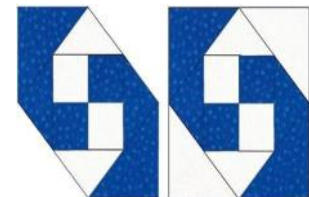
## Instructions:

4-patch: Sew the two 1 5/8 inch x 7 inch strips together. Press toward the darker fabric. Sub-cut into four 1 5/8 inch segments. Sew two segments together to make a 4-patch unit. Make two 4-patch units. Press seam to either side. Trim to 2 5/8 inch square. Make sure to trim all four sides evenly so that the middle of the 4-patch remains centered.

Triangle round 1: Sew a 2 1/2 inch dark teal triangle to opposite **sides** of the 4-patch, matching centers. **Pay attention to the orientation of the 4-patch. The dark teal squares are on the upper right and lower left quadrants.** Press toward the triangles. Repeat with the light teal 2 1/2 inch triangles on the remaining two sides. Press toward the triangles. Trim to 3 1/2 inch square, making sure the center of the 4-patch is lined up with the 1 3/4 inch mark on the ruler.

Triangle round 2: Sew the dark teal 3 1/2 inch triangles to opposite sides of the unit, making sure the orientation of the block matches the figure to the right. Press toward the triangles. Repeat for the light teal 3 1/2 inch triangles. Trim to 4 3/4 inch square, making sure the center of the 4-patch is lined up with the 2 3/8 inch mark on the ruler.

Triangle round 3: Sew the dark teal 4 1/2 inch triangles to opposite sides of the unit, making sure the orientation of the block matches figure to the right. Press toward the triangles. Repeat for the light teal 4 1/2 inch triangles. Trim the block to 6 1/2 inch square, making sure the center of the 4-patch is lined up with the 3 1/4 inch mark on the ruler.



Block Party August 2021 From Summer Fun Quilt Along 1, Week 1 By Julie Cefalu, The Crafty Quilter.com



# Apple Block

## Materials Needed:

Background fabric:

One 6 inch X 2 ½ inch rectangle  
One 1 ½ X 1 ½ inch square

Two 1 7/8 X 1 7/8 inch squares cut diagonally into two triangles; you will have one extra triangle  
One 4 ½ X 2 ½ inch rectangle

Two 2 7/8 X 2 7/8 squares cut diagonally into two triangles



## Instructions:

### Stem Row:

Sew each of three green triangles to each of three background triangles (from the 1 7/8-inch squares). Press seams to the green side. Line up the three half green squares as shown to the right, with the 1 ½ inch background square in the lower right position. Sew top squares to bottom squares; press in opposite directions. Sew the two sections together, lining up middle seam; press in either direction. Attach the brown strip to the left of the square. Press seam toward the brown.



Attach the 6 inch background rectangle to the brown stem strip. Press seam toward the brown. Attach the 4 ½ inch

### Top and Bottom Apple Rows:

Sew together red triangles to background triangles; press to the red rectangle. Sew squares to each end of the row 1 and 5 red rectangles as shown to the right. Flip the row five strip so that the background fabric is on the outside bottom corners.



## Stitch Rows Together:

Sew the stem row to the top apple row, making sure to align strips properly. Press toward the apple top. Sew apple rows 2 and 3 together. Press to one side. Sew apple row 4 and bottom apple row together.

Press toward row 4. Sew top section to middle section. Press seam to one side. Sew middle section to bottom section. Press seam to one side.

## 2021 Holiday Blocks

What is your favorite block? Do you love an Ohio star? Does a block made from flying geese get your creative juices flowing? Do you delight in beautiful appliqué? Have you always enjoyed the movement of a drunkard's path? Are you mad for the precision that paper piecing gives pointy blocks?

In the spirit of getting back to the things we love, the Holiday Block committee (aka the Remnants Bee) is asking for individuals, bees, and groups of friends to sponsor a Holiday Block.

Here is how the program works.

Sponsors commit to participate by September 1st. Sponsors select a block (or blocks) to make a quilt top and submit an application to have the block approved.

After approval, sponsors kit the instructions and the fabrics for the blocks to sell at the October and November Guild meetings.

Guild members will purchase the kits and return their finished blocks to the sponsors at the December Guild meeting.

Sponsors will draw a winner for each quilt and the winner gets all of the finished blocks as well as any unsold kits. Participants get to keep the instructions.

The best part is when the winners bring finished quilts back to show the Guild!

Q — Do the blocks have to be Holiday themed?

A — They do not. Choose any design and any colors you want. The blocks are turned in and awarded to the winner at our December Holiday Social, hence the name. That being said, Holiday designs are popular.

Q — Are the costs of making the kits covered?

A — You may submit a reimbursement form (supplied on request) for a maximum of \$50. Many groups and individuals choose to donate some or all of the fabric required to make the kits, but you are certainly not required to do so.

Q — What techniques are appropriate for Holiday Blocks?

A — All techniques and skill levels are welcome. Generally, relatively simple designs with appealing colors/fabrics are popular. In the past, we have had redwork, simple piecing, paper piecing, appliqué or even some combination of the above.

Q — How many blocks per sponsored design?

A — Typically, between 16 to 25 kits. However, a kit may contain one or two blocks.

Q — How many sponsored designs will be sold?

A — We try for 10 to 12 different designs, preferably representing a wide variety of techniques and difficulty levels.

Q — If I want to sponsor a block, can I get started right away?

A — Do not spend any money for which you will want to be reimbursed until your design is approved. First you must submit an application with a color image of the block design. (A clear, but simple drawing will do.) This is to prevent duplicate (or near duplicate) blocks.

Please consider sponsoring a Holiday Block. Contact Darlene Silverman ([jsilverman@nc.rr.com](mailto:jsilverman@nc.rr.com)) if you want to sponsor a block or if you have any further questions.



# Our Common Threads—Why We Quilt

By Lisa McLaughlin

Greetings Guild Members! This month I would like to add a new feature to our newsletter. When I joined the guild three years ago, I was absolutely amazed at the quality of the beautiful quilts, the knowledge, and years of experience that was held in one room. Honestly, I was quite intimidated and not sure I was in the right place! But I *really* wanted to learn to quilt well. Not just sew pieces of fabric together, but to make beautiful quilts to give to family and friends. Quilts have always reminded me of the love I felt from my grandmother, wrapped in one of her “nanny blankets.” We were a military family so we didn’t see her very often but those blankets traveled around the world with us.

My grandmother began making these quilts when my mother was very young in the late 1930’s and 1940’s. Times were difficult as she had unexpectedly become a single parent, struggling to keep her family of four boys and a girl together. They planted a garden, had a few chickens and a cow, and would catch fish from the ocean. Nanny would take in handwork—repair clothing, make quilts and hook rugs, or knit wool caps, scarves and socks to earn money or barter for other necessities. Her quilts were of the time—rustic, heavy and so very warm. They had to be for the long, cold Newfoundland winters! The quilt tops would be made up of leftover scraps of clothing or other fabric: the “batting” an old worn blanket. She would then hand tie them to keep them together. These were necessity quilts but still beautiful and colorful in their own way.

Quilting for me is about sharing the love I have for the people in my life with the gift of warmth and fond memories. So I ask you—why do you quilt? I would love to hear your stories and share them with our members. You can write the article yourself or let me “interview” you before our meetings. Let’s share the love of our quilts with each other, as the common thread among us all.





## To place an ad in the *Thimbleful Newsletter*:

Email your ad to Lisa McLaughlin @ [scarletnewfie@gmail.com](mailto:scarletnewfie@gmail.com) and mail a check payable to:  
**Capital Quilters Guild.**

Ads are due by the third Thursday of the month for the next month's issue.

\$5—Classified  
\$5—Business Card  
\$10—Quarter Page  
\$20—Half Page

Capital Quilters Guild  
PO Box 20331  
Raleigh, NC 27619



### ***Special Thanks to:***

**Threadwaggle  
Loving Stitches  
Cheryl Porter  
Original Sewing Co  
Quilt Expo  
for donating door  
prizes!**



**Love Bug**  
·LONGARMING·

Carrie Hauser  
Longarm Quilting Services

Visit: [www.lovebuglongarming.com](http://www.lovebuglongarming.com)  
Call/Text: 919-945-9195  
Email: [lovebuglongarming@gmail.com](mailto:lovebuglongarming@gmail.com)

Find me on   [LovebugLongarming](https://www.facebook.com/LovebugLongarming)



Visit us!

10-5 Mon - Sat

10 - 7 Tuesday

1-5 Sunday



935 N. Harrison Ave.

Cary, NC 27513

919-238-9739

[caryquilting.com](http://caryquilting.com)



Watch Us On  
**You Tube**  
Every weekday  
at noon!



4,000 Bolts of quilting cottons

6,000 items in inventory

950 square foot classroom





Whatever's  
Quilted  
Handi  
Quilter®



We've Got your Back!

With more than 260 wide backs, more than anyone in the state.



elna®



accuquilt  
*Quilters need machines. Quilters quilt.*

936 Gateway Commons Cir.

Wake Forest 27587

[www.WhateversQuilted.com](http://www.WhateversQuilted.com)

[Donna@WhateversQuilted.com](mailto:Donna@WhateversQuilted.com)

Near Lowes Food on SR 98



## Retreat at Lake Gaston

Perfectly appointed for quilting groups  
with 12 beds, 2 kitchens, worktables,  
ironing stations, cutting counters, a mini-  
shop and more!

RetreatLKG.com





## TOP TO BOTTOM QUILTING

*Serving your machine quilting needs with  
End to End Specialty Quilting.*

*Many designs & threads for you to choose from.  
Drop offs/deliveries for local quilting plus shipping  
for out of town customers.*

[toptobottomquilting@outlook.com](mailto:toptobottomquilting@outlook.com)



Cindy Markham  
919-208-8941  
Raleigh, NC



## WISH UPON a QUILT

## JANOME

North Carolina's #1 Award  
Winning Dealership



8817 Westgate Park Drive  
Suite 104  
Raleigh, NC 27617

[www.wishuponaquilt.com](http://www.wishuponaquilt.com)

919 782-6363



## G's Quilt & Craft Retreat

Quilt & Craft the Day Away

710 Miller Rd  
Hillsborough, NC 27278  
[gsquiltandcraftretreat.com](http://gsquiltandcraftretreat.com)

Karen and Bob Gallegly  
[gsretreat@gmail.com](mailto:gsretreat@gmail.com)  
984-888-0932

### Ladybug's Cottage, Inc.

*Fabrics, Notions & More*

123 N Main Street ~ PO Box 1553 ~ Wendell, NC 27591

*Sew much fun with us...*

*Come shop for Quality Cotton Fabrics,  
Threads, Buttons, Zippers & more*

*Be sure to check the Specials page online for all our discounts.*



(919) 365-3636

[WWW.LADYBUGSCOTTAGE.NET](http://WWW.LADYBUGSCOTTAGE.NET)

*Ask us about the NC*







**7076 Ramsey St./HWY 401  
Fayetteville, NC 28311  
(910) 630-3912 Mon- Sat 9 am-5 pm  
<https://www.lovingstitches.net>**

### **BERNINA Freedom Sale!**

Now thru August 31st  
Great Savings on most models & Free Gifts with Purchase!  
0% Interest financing for 60 months till August 17th!



**ORIGINAL**  
Sewing & Quilt  
E ♦ X ♦ P ♦ O

**Come see us in Raleigh!**  
August 5th-7th Booth #604  
We'll have Bernina Longarms for you to see & test drive.  
Take advantage of our Freedom Sale, 0% financing, and our Show Specials!  
Buy your longarm from a dealer with over 17 years of longarm experience.



**Do you own a Bernina 770?**  
Ask us about upgrading your 770 to a Plus model.  
Gain new, amazing sewing, quilting & embroidery features on your machine!

made to create **BERNINA**



**219 NC Hwy 98E Bunn, NC**  
919-497-0828 • [www.thebrokenneedle.com](http://www.thebrokenneedle.com)

REGULAR SHOP HOURS  
Tuesday-Saturday 10 am til 5 pm  
Janome authorized dealer and service center.  
*Absolute lowest prices on Janome!*



**JANOME**

Fabric - Notions - Patterns - Kits - Classes



**Julianne Walther**  
Professional Appraiser  
[julianne@caryquilting.com](mailto:julianne@caryquilting.com)

935 N. Harrison Ave.  
Cary, NC 27513  
919.238.9739 ext. 5

[appraisemyquilt.com](http://appraisemyquilt.com)

## 2021 Guild Leadership Board Members

**President:** Anna Norris

**Vice President:** Sandy Wilson

**Secretary:** Marsha Tolley

**Treasurer:** Carolyn Wigmore

**Charity & Community Outreach:** Roberta Miller-Haraway & Ginny Nugent

**Communications:** Lisa McLaughlin

**Fundraising:** Irene Thomas

**Membership:** Betsy Proctor-Roose

**Teachers & Workshops:** Ann O'Brien

**Member at Large 1:** Cindy Prow **Member at Large 2:** Marie Grasso

## Committee Members

**Bee Keeper:**

**Block Party:** Jan Chvatal

**Holiday Blocks:** The Remnants Bee (Darlene Silverman)

**Hostesses:** Katie Greenwood & Alma Mellish

**Library:** Sherill Boyce & Wendy Ann Smith

**Quilts for Kids:** Kate Pearson & Maria Wall

**Quilts on Wheels:** Sue Hatch

**SAFEchild:** Vickie Peoples and Tiffany Harwood

**Secret Sew-ciety:**

**Social:** Maria Kleinman

**Sunshine & Shadows:** Joni Amerson

**Quilt Show:** Sue Ann Jatko & Nora Bailey



**To contact us, email:** [information@capitalquilters.org](mailto:information@capitalquilters.org)



# Upcoming Events!

## CQG Workshop Dates

**Sept. 25:** Dawn Piasta—Nōtan Quilting

**Oct 22-23:** Julia Graves—Tricks with Transparencies and Gemstones

## Quilt/Vendor Shows

**Sept. 18-19:** Statesville Fall Quilting Marketplace. Statesville Civic Center, 300 Center Street. For more info: Quilter's Gallery (704) 376-2532 or [www.quiltersgallery.net](http://www.quiltersgallery.net)

**Oct. 15-16:** The Hearts and Hands/ECA Quilters' Guild of Sanford Quilt Show. Dennis Wicker Civic Center, 1801 Nash St., Sanford, NC . For more info: Contact Barbara Massengill at [barmas@charter.net](mailto:barmas@charter.net) or (919) 499-0766 or Suzanne Dykeman at [daisy1949@optonline.net](mailto:daisy1949@optonline.net) or 845-616-1004

## Other Events of Interest

**Aug 17-Oct 17:** Hollis Chatelain's Retrospective Exhibit (33 quilts from 1995 to 2021). The Perspective Gallery at Virginia Tech. Blacksburg, VA. (540) 231-6040 or [squiresgallery@vt.edu](mailto:squiresgallery@vt.edu)

**Sept. 18th:** National Sew a Jelly Roll Day!

*Let us know if there are any other events of interest you would like to see noted in our Newsletter.*



## Capital Quilters Guild Membership Form

July 1, 2021- June 30, 2022

Help us confirm that our records are accurate by completing all the information below:

Name: \_\_\_\_\_

Address: \_\_\_\_\_

City: \_\_\_\_\_ State: \_\_\_\_\_ Zip code: \_\_\_\_\_

Phone: \_\_\_\_\_ Email: \_\_\_\_\_

Birth Month \_\_\_\_\_ Birth day \_\_\_\_\_ (for member benefits)

Are you a new member? Yes \_\_\_\_\_ No \_\_\_\_\_

The Member Directory is published in print for a fee and available free on CQG member-only social media. Please check this box if you do NOT wish to be included in the directory ☐

Are you a member of CQG's Facebook page? Yes \_\_\_\_ No \_\_\_\_

If you are a member of a bee, what is the name of your bee? \_\_\_\_\_

If you would like to join a bee, tell us your preference (please circle ALL of your preferences): Day/Night Weekday/Weekend North/South/East/West/Any Region Art/Hand/Charity/other \_\_\_\_\_

### Membership Fees:

Please note that all members are required to pay dues. (Please circle your membership type)

Regular Membership ..... \$40.00

Quilters aged 70 or older (prior to, or on June 1, 2021)..... \$25.00

Junior Membership (18 years and younger; full scholarships are currently available).....~~\$25.00~~ 0.00

Printed CQG Membership Directory (to be picked up at the November meeting)..... \$5.00

Optional donation (tax deductible) .....\$ \_\_\_\_\_

**Please bring this form with payment to the next meeting or mail to:**

**Capital Quilters Guild**

**PO Box 20331**

**Raleigh NC 27619-0331**

Date \_\_\_\_\_ Check # \_\_\_\_\_ Cash \_\_\_\_\_ Credit Card (last 4 digits) \_\_\_\_\_ Total: \_\_\_\_\_

## Capital Quilters Guild- Spring Workshop Registration Fall 2021

Name\_\_\_\_\_

Phone\_\_\_\_\_

Address\_\_\_\_\_

Email\_\_\_\_\_

**Zoom Workshop – Member fee: \$30 Non-member fee: \$45**  
**In Person Workshop – Member fee: \$55 Non-member fee: \$75**

| <u>Teacher</u>  | <u>Class</u>                    | <u>Date</u> | <u>Amt: Cash/Ck#/Chg</u> |
|-----------------|---------------------------------|-------------|--------------------------|
| 1. Dawn Piasta  | Zoom—Notan                      | 9/25/21     | \$_____                  |
| 2, Julia Graves | In Person—Tricks w/Transparency | 10/22/21    | \$_____                  |
| 3. Julia Graves | In Person—Gemstone Bling        | 10/23/21    | \$_____                  |

Total: \$\_\_\_\_\_

\*\*\*\*\*

**Payment:** Due when you sign up. ( Payment with charge card/cash available at monthly guild meeting only.)

Make your check payable to : **Capital Quilters Guild**

**Mail your check and registration form to:**

Ann O'Brien  
1336 Holt Road  
Apex, NC 27523

**Location:** In person workshops will be held at  
**Highland United Methodist Church**  
1901 Ridge Rd Raleigh, NC 27607.

**Most Class hours: 9am-3:30pm Be sure to pack a bag lunch!**

**Refund Policy:** Full refund will be made if requested 30 days prior to the workshop. Without 30 days notice, you will only receive a refund if space can be filled from the waiting list. If not, you will receive a credit for a future class.

**Inquiries:** [information@capitalquilters.org](mailto:information@capitalquilters.org)